

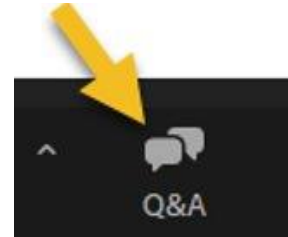
A Shared Vision: Building Community Partnerships for School-Based Eye Care Programs

April 23, 2026

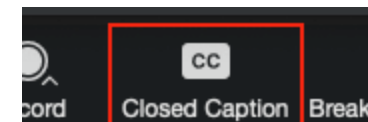
3:00 – 4:00 PM ET

REMINDERS

- All attendees are in listen-only mode.
- To ask a question during the session, use the “Q&A” icon that appears on the bottom of your Zoom control panel.



- To turn on closed captioning, click on the “CC” button.



- Please complete evaluation poll questions at the end of the presentation.

Today's Presenters



Donna Fishman
Director
National Center for
Children's Vision and
Eye Health,
Prevent Blindness



Luke Ertle, MPH
Program Director
Association of
Clinicians for the
Underserved



Dannielle Dobbins, M.Ed.
Director
School-Based Health
Alliance



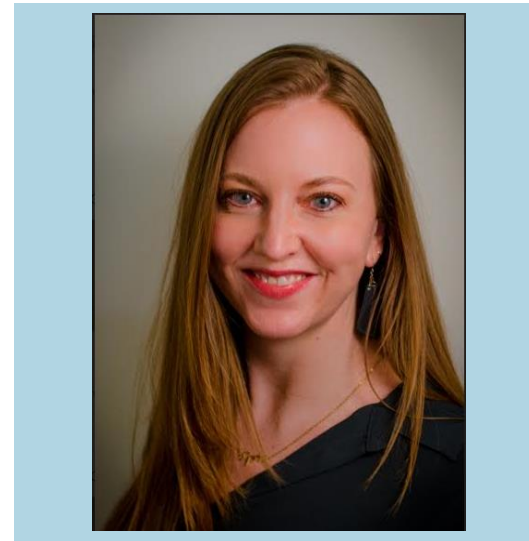
Harper Byers, BA
Coordinator
School-Based Health
Alliance



Today's Presenters



Becca Chown, OD, FAAO
Optometric Physician
Envision Eye Care



Meagan Baker, OD, FAAO
Director of Vision Services
Cherry Health



Our Initiatives

For more than 20 years, the School-Based Health Alliance has been at the forefront of efforts to advance child and adolescent health. Our collaboration with national, state, and local partner organizations has yielded a multitude of resources, learning collaboratives, and initiatives that have helped to establish and enhance school-based health care as a critical component of community health.

OUR WORK

We are continually making An impact

Through our initiatives, we have been able to empower school-based health providers with the knowledge, tools, and resources necessary to respond effectively to the unique health needs of children and adolescents. By building their capacity and promoting best practices, we have not only improved the quality of care provided but also helped to establish a strong foundation for future generations.

Our work has had a profound impact on the development of school-based health care and the broader community. By investing in this critical area of healthcare, we have been able to help promote the well-being of children and adolescents and create a healthier, more prosperous future for all.

Learn More About Our
Work at
<https://www.sbh4all.org/>



Prevent Blindness

Our mission is to prevent blindness and preserve sight.

The National Center for Children's Vision and Eye Health
Our mission is to improve children's vision through strong partnerships, sound science, and targeted public policy.

- Public and professional education
- Certified vision screening training
- Community and patient engagement programs



**National Center
for Children's Vision
and Eye Health**

Prevent Blindness

Learning Objectives

Participants will be able to...

- Identify key partnership types that can strengthen and expand eye care access for school-age children.
- Describe practical strategies for building and sustaining partnerships, including roles, responsibilities, and workflows that support eye care delivery.
- Apply lessons from programs serving various populations to develop or refine an eye care expansion plan tailored to participants' local needs and capacity.



Comprehensive. Quality. *Healthcare.*

School Vision Program

Meagan Baker, OD, FAAO

Director of Vision Services

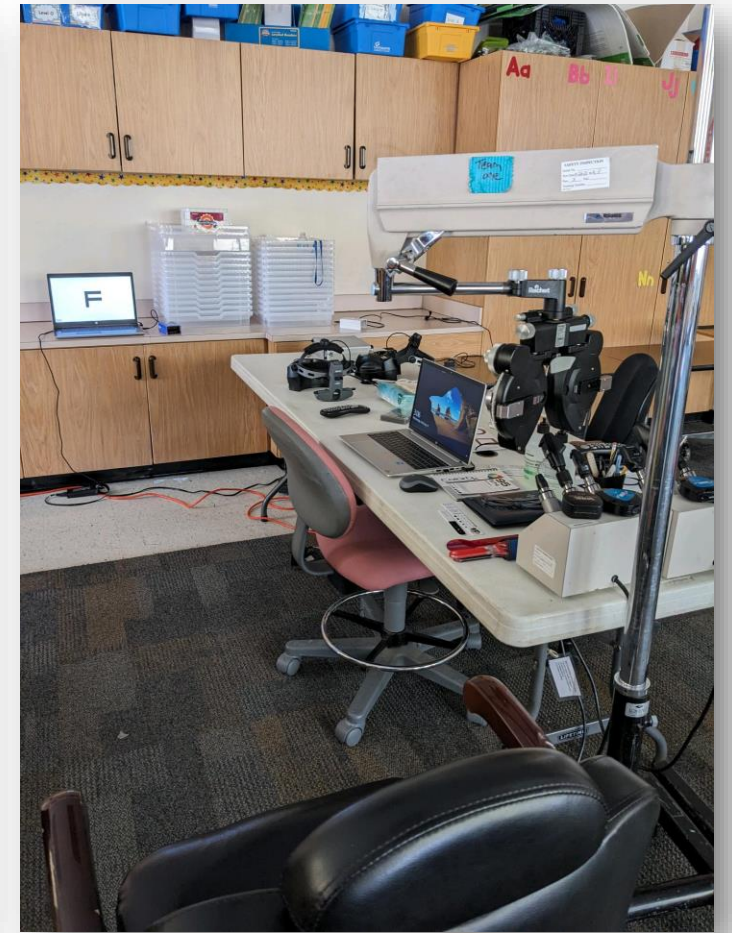
Program Overview

- Two vision teams operate in partnering districts.
- One with mobile equipment & one on a mobile clinic.
- Teams comprised of Optometrist, Optician, Technician, (Driver).
- Prioritize elementary and middle schools.
- Students receive comprehensive, dilated examinations.
- Students requiring follow-up are seen at our brick-and-mortar clinics.
- Staff return to schools to dispense glasses.

Program Planning

- School district partnerships and collaboration.
- Community partnerships.
- Electronic &/or paper consents.
- Insurance eligibility.
- Determining school schedule.
- Coordinating school moves.
- School day logistics.
- Parent communication/calls.

Mobile Equipment



Mobile Equipment: Benefits & Considerations

Benefits	Considerations
Cost	Clinical space & equipment
Space & logistics	Space & logistics
Staffing & operations	Staffing & operations
Schedule & productivity	Schedule & productivity
Technology & infrastructure	Patient experience

Benefits

Cost	Low startup costs
Space & logistics	More space.
	Access to restrooms and breakrooms.
	Students remain inside the school.
	Communication with school staff.
Staffing & operations	Less staff required.
Schedule & productivity	Longer clinical days.
Technology & infrastructure	Stable internet connectivity.

Considerations

Clinical space & equipment	Less exam equipment available.
	Equipment can be damaged during moves.
Space & logistics	Some school spaces are difficult to work in.
	No control over space/lighting.
	May displace school staff.
Staffing & operations	Staff cross-training.
	Prioritize larger schools.
Schedule & productivity	Set-up and moves cut into clinical time.
	Move logistics.
Patient experience	Limited patient privacy.

Mobile Clinic



Mobile Clinic: Benefits & Considerations

Benefits	Considerations
Clinical space & logistics	Cost
Space & logistics	Clinical space & logistics
Schedule & productivity	Space & logistics
Patient experience	Staffing & operations
	Schedule & productivity
	Staff experience
	Technology & infrastructure

Benefits

Clinical space & equipment	Full control over space.
	More exam equipment available.
	Consistent examination/lighting conditions.
Space & logistics	Do not occupy space inside the school.
	Can accommodate smaller schools.
	Can be used at other health centers and community events.
Schedule & productivity	No lost clinical time due to moving equipment.
	Easier move logistics.
Patient experience	Improved patient privacy.
	Novelty can positively impact student behavior.

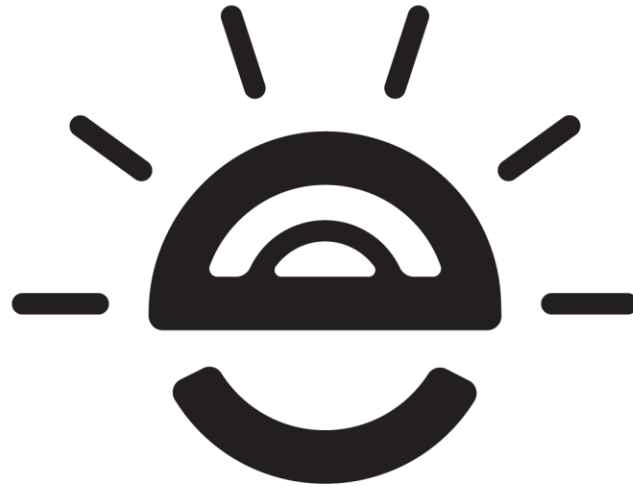
Considerations

Cost	High startup costs.
	Ongoing maintenance costs.
Clinical space & equipment	Limited space.
	Less temperature control.
Space & logistics	Students must be escorted in and out of school.
Staffing & operations	Requires a driver on staff.
	Equipment must be secured daily.
Schedule & productivity	Shorter clinical days (parking availability).
Staff experience	Motion sickness.
	No restroom/breakroom access.
Technology & infrastructure	Variable network connectivity.

Glasses

- Medicaid benefits are used for eligible students.
 - Primarily sent to classic lab.
- Use EssilorLuxottica Foundation, Changing Life through lenses for uninsured or ineligible students.
 - <https://changinglifethroughlenses.org/>
- If students require replacement glasses, they can be ordered & dispensed at our brick-and-mortar clinics.

Category	Mobile Equipment (Inside School)	Mobile Clinic (Bus)
Cost	<ul style="list-style-type: none"> • Low startup costs 	<ul style="list-style-type: none"> • High startup costs • Ongoing maintenance
Clinical Environment & Equipment	<ul style="list-style-type: none"> • Limited exam equipment • No control over exam space. • Risk of equipment damage during moves 	<ul style="list-style-type: none"> • Full control of exam environment • More equipment (slit lamp, camera) • Consistent exam space/lighting
Space & Logistics	<ul style="list-style-type: none"> • Uses school space • Easier access to students • Schools may need to displace staff 	<ul style="list-style-type: none"> • Limited physical space • Requires parking availability • Does not use school space
Staffing & Operations	<ul style="list-style-type: none"> • Less staff required • Must prioritize larger schools 	<ul style="list-style-type: none"> • Requires driver • Equipment secured daily
Schedule & Productivity	<ul style="list-style-type: none"> • Longer clinical days • Time lost to setup and moving 	<ul style="list-style-type: none"> • Shorter clinical days • No time lost to moving equipment
Patient Experience	<ul style="list-style-type: none"> • Familiar school setting • Limited privacy 	<ul style="list-style-type: none"> • Improved privacy • Novelty may improve behavior • Motion sickness possible
Technology & Infrastructure	<ul style="list-style-type: none"> • Stable internet 	<ul style="list-style-type: none"> • Variable internet
Flexibility & Reach	<ul style="list-style-type: none"> • Best for high-volume schools 	<ul style="list-style-type: none"> • Can serve smaller schools, health centers, and community events



enVISIONTM
EYECARE FOR ALL

Envision EyeCare for All: Who are we?

- 501c3 non-profit mobile vision clinic
- Founded in 2023 to address the gaps in eyecare that exist in for underserved individuals throughout Oregon
- Our mission is to make eye health a cornerstone of healthcare — empowering every Oregonian with the vision, opportunity, and support they need to build a brighter future

What do we do?

- Provide comprehensive eye exams & glasses at no out-of-pocket cost
- Provide vision screenings, outreach, and health education services
- We break down barriers by bringing services directly to individuals and follow through care with the use of a community health worker
- We collect and analyze information to talk about the systemic change needed for eye health and vision services
- Everything we do is through community partnerships and diversified funding (grants, local governments, donations and billing)

Why do we do it?

- Access to eye health and vision services, in health centers throughout Oregon, are limited or non-existent
- Improving vision improves education, economic stability, food security and overall health outcomes
- Every human should have access to quality eye care and the devices needed to see

Who are our community partners?

- Health Centers
- School-Based Health Centers
- School Districts
- County Health Departments
- Child Development Coalitions
- Organizations that provide Vision Screenings
- Food Networks

How Does it Work: The Portable Model

Portable clinic: Transport a full eye exam lane and optical in heavy duty toolboxes. Every clinic takes approximately 1 hour to set up and deconstruct.



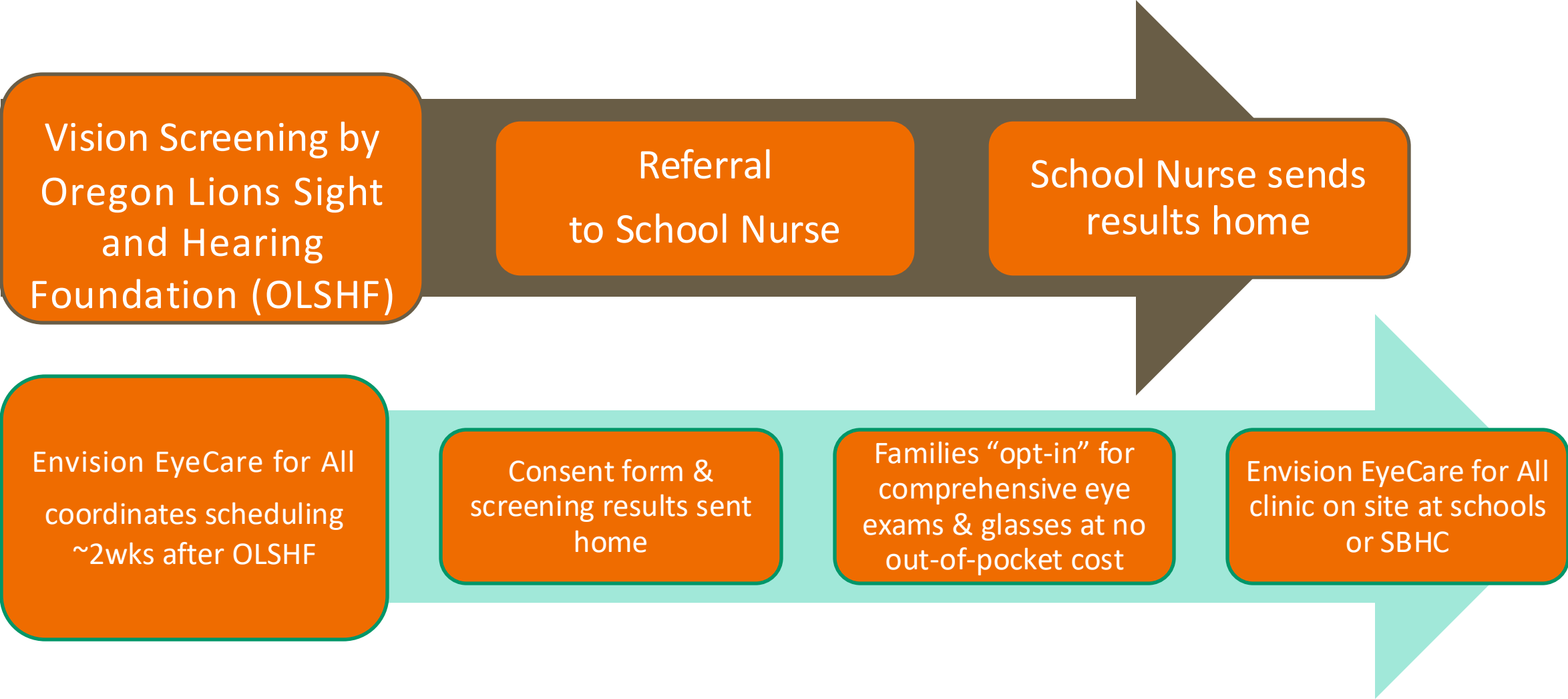
How Does it Work: The Portable Model

Process:

1. Partnership is established
2. Clinic date(s) determined
3. Patients screened or identified
4. Patients scheduled
5. Comprehensive care provided
6. Glasses ordered
7. Referrals made (as needed)
8. Glasses delivered
9. Community Health Worker follow-up



ORS 581-021-0031 (2014): Vision Screening is required for all children over the age of 7 and entering the public school system. Screenings are focused on detection of Refractive Errors, Amblyopia, Anisometropia and Strabismus



Partnership #1

Community Partners: Hood River School-Based Health Center (One Community Health) and Hood River County School District

Location: Hood River School Based Health Center



Exam Room converted to an Eye Lane



Lab converted to an Optical



Partnership #2

Community Partners: Gilliam County and Condon School District

Location: Condon School



Multipurpose Room (MPR)



MPR converted to an Optical



Stage converted to an Exam Lane

Limitations of the portable model

- Partner is needed to provide the physical location
- Every location has its own unique set up challenges
- Day and time is limited to availability of partner space
- Time for set up and take down decreases the number of patients that can be seen
- Moving equipment is physically demanding

Staff



Rebecca R. Chown, OD, FAAO

Executive Director and Clinician

23 years clinical experience

17 years business management



Anna Elias

Optician and Oregon State Qualified Medical

Interpreter

Community Health Worker

Bilingual and bicultural

10 years in eyecare, 18 years in healthcare total

Thank You

Questions?

Rebecca Chown, OD, FAAO

Rebecca@eec4a.org



Questions?

Please enter your questions into the “Q&A” box of the Zoom control window.



Please complete our Zoom poll





2026

National School-Based Health Care Conference

June 23-25, 2026

American University Washington
College of Law



**SCHOOL-BASED
HEALTH ALLIANCE**

The National Voice for School-Based Health Care



**REGISTRATION
IS NOW OPEN**

**Scan to
Register**

bit.ly/SBHC2026

Stay Connected!



1. Subscribe to our bi-weekly e-newsletter (Digest)

Go to <https://bit.ly/SBHAdigest>

2. Follow us on social media



<https://www.facebook.com/SchoolBasedHealthAlliance>



<https://twitter.com/sbh4all>



<https://www.linkedin.com/company/school-based-health-alliance/>



<https://www.instagram.com/sbh4all/>



Scan this QR code to subscribe

Thank you!

Disclaimer

This webinar is supported by the Health Resources and Services Administration (HRSA) of the U.S. Department of Health and Human Services (HHS) as part of an award totaling \$625,000 with 0% financed with non-governmental sources. The contents are those of the author(s) and do not necessarily represent the official views of, nor an endorsement, by HRSA, HHS, or the U.S. Government. For more information, please visit [HRSA.gov](https://www.hrsa.gov).